

RETAIL REALTY SERVICES

Full Service Real Estate & Construction Management Company

PROPERTY HIGHLIGHTS

Address: 317 W.Meeker Street
Kent Washington, 98031

Price: \$ 15.00 S/F Rent

NNN: \$ 4.00 S/F

Suite: 2300 S/F

Divisible: 1500/800

Available Immediately

Outside End Cap

On site parking



PROPERTY DESCRIPTION- City Center Building

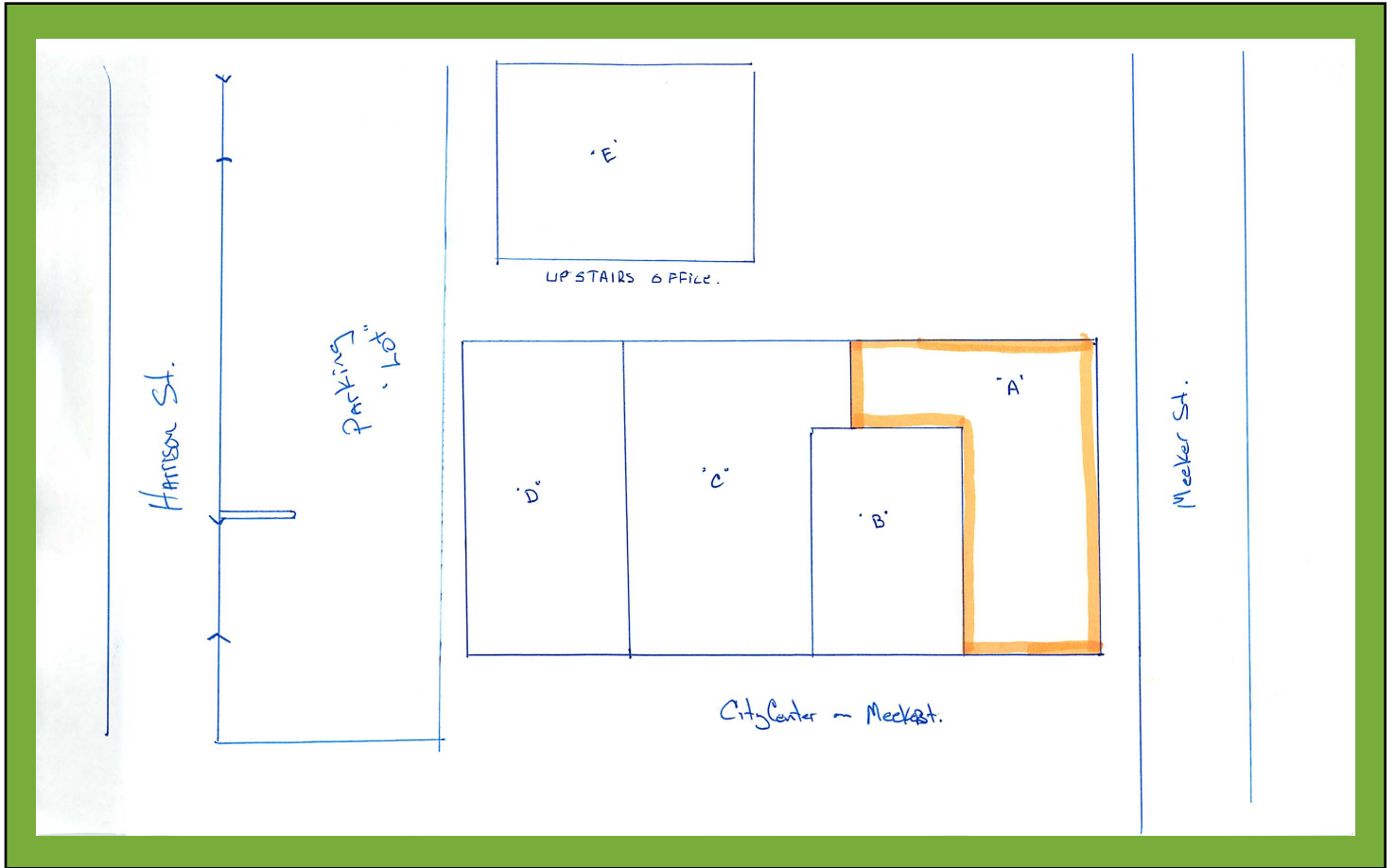
Large retail corner in historic downtown Kent, property has an entrance on both Meeker and Harrison Street with a pedestrian walkway/sitting area that runs parallel to the building. Walkway offers easy access to the city park and library and quick access to historic area/City Hall. Space has been used for traditional retail space but landlord is willing to convert to office and or divide up into smaller space (1500/800 s/f). Lots of windows and display windows, larger storeroom in back with built in shelving units.



CHAD A. GLEASON

9831 S. 220th Place, Kent, WA 98031 tel: 253.656.5357 fax: 253.559.7956

e-mail: chad@retailrs.com website: www.retailrs.com



Demographics

5 Minute drive times

Populations: 12,201
 Avg. HI: \$54,100.00
 HH: 5,355
 Business: 1,995

10 Minute drive times

Populations: 171,829
 Avg. HI: \$62,567.00
 HH: 68,906
 Business: 9,730

Full demographics package on request.