

6409 Fleming Street, Office for Lease, Everett, Washington

ADDRESS:

6409 Fleming Street
Everett, WA

AVAILABLE SPACE:

**1,600 sq ft office
on Fleming**

Set up for the tenant
to move right in.
Conference room/
kitchen, 4/5 private
offices, reception
and administrative
area. Possible base-
ment storage.

DEMOGRAPHICS:

Population:
16,500 (1 mile)
161,000 (5 mile)

Average HH Income
\$59,642

*For additional infor-
mation, please con-
tact:*

Retail Realty Services

Joe Beynon
425-868-5449
425-466-3018 cell
425-868-2660 fax
Joe@retailrs.com

Chad Gleason 253-981-3190

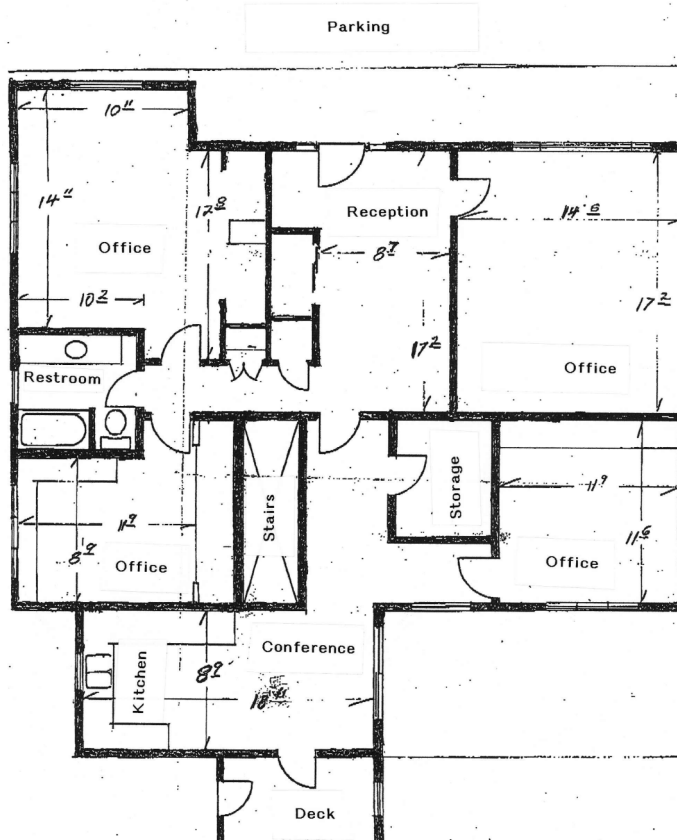
253-559-7956 fax
206-380-3574 cell

For additional infor-
mation please go to
www.retailrs.com



Good parking for the tenants
and guests. Additional parking
possible.

Professional uses wanted. This is an ideal cost effective office set up for an attorney, accountant, Title company, engineer, architect or construction company. Use your imagination.. Could even be a spa/beauty shop set up. Visible from Evergreen Way.



This quiet Fleming
frontage office offers
convenience to all of
Everett without the
hassle of Evergreen
Way or Everett Mall
Way traffic. Ready
to move in with mi-
nor work such as
paint and carpet and
your client will have
a new home quickly.

**Reasonable
rates starting as
low as \$12.00 a
foot.**

Most offices are
large enough to be
further divided. Cur-
rent storage area
could be an addi-
tional small office.
Possible additional
storage is available
in basement.

6409 Fleming Street, Office for Lease, Everett, Washington

ADDRESS:

6409 Fleming Street
Everett, WA

AVAILABLE SPACE:

**1,600 sq ft office
on Fleming**

Set up for the tenant
to move right in.
Conference room/
kitchen, 4/5 private
offices, reception
and administrative
area. Possible base-
ment storage.

DEMOGRAPHICS:

Population:
16,500 (1 mile)
161,000 (5 mile)

Average HH Income
\$59,642

*For additional infor-
mation, please con-
tact:*

Retail Realty Services

Joe Beynon
425-868-5449
425-466-3018 cell
Joe@retailrs.com

Chad Gleason
253-981-3190
253-559-7956 fax
206-380-3574 cell

For additional infor-
mation please go to
www.retailrs.com

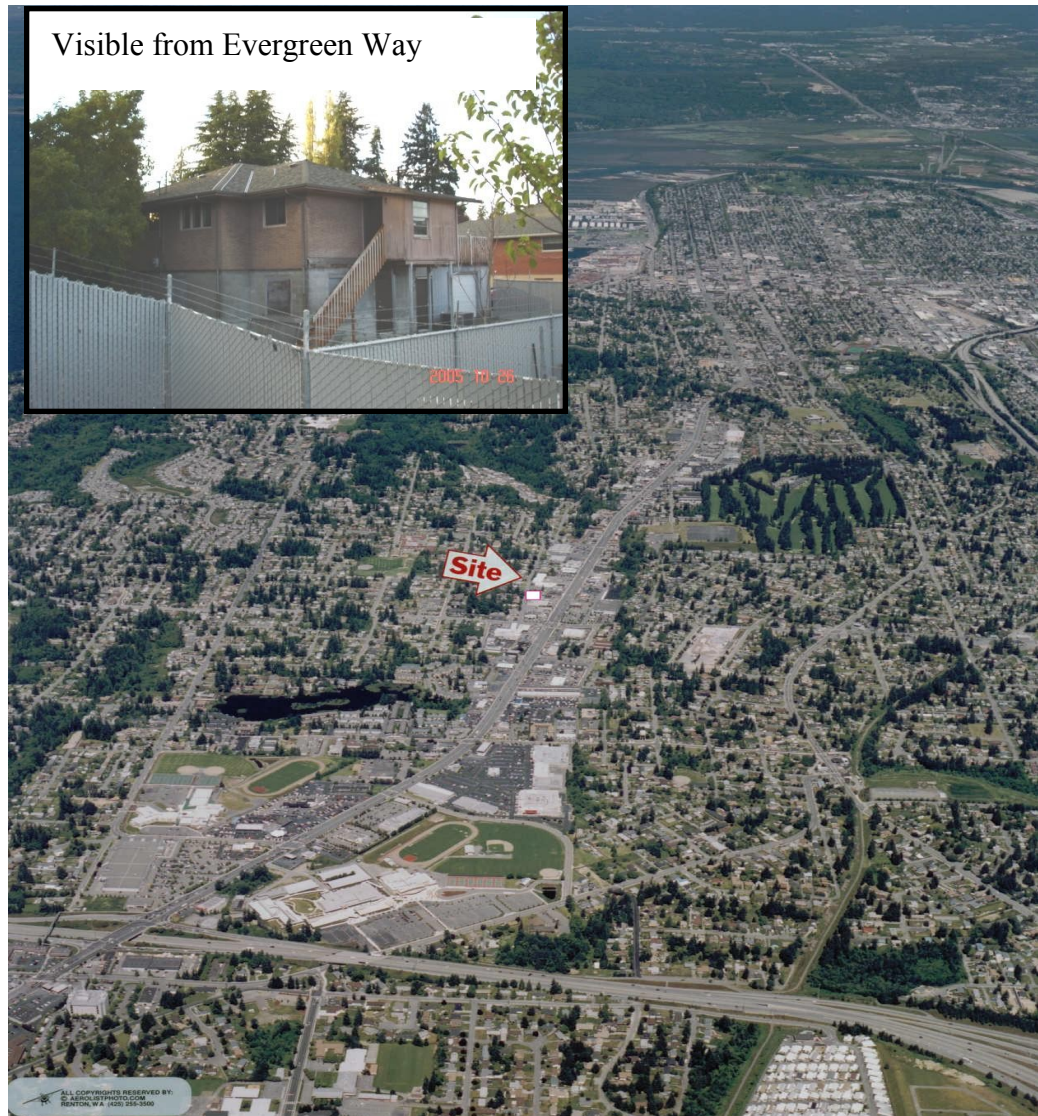


This quiet Fleming frontage office offers convenience to all of Everett without the hassle of Evergreen Way or Everett Mall Way traffic. Ready to move in with minor work such as paint and carpet and your client will have a new home quickly. **Reasonable rates starting as low as \$12.00 a foot.**

Most offices are large enough to be further divided. Current storage area could be an additional small office. Possible additional storage is available in basement.



Visible from Evergreen Way



ALL COPYRIGHTS RESERVED BY:
© AEROLITHPHOTO.COM
EVERETT, WA (425) 256-2666